

MODEL7212

10/100M Ethernet to FE1 Bridge

Features

1. Using E1 line transparent transfer Ethernet data
2. Support $N \times 64\text{Kbps}$ ($N=1 \sim 32$) rate
3. Support local clock and line clock
4. Support pretend random coding loop test
5. E1(G.703)interface support 120ohm(RJ-45)and 75ohm(BNC double coaxial)
6. Ethernet MAC address percolate function
7. Support VLAN over length data bag
8. Ethernet port support 10M/100M full-duplex/half-duplex



Introduction

MODEL7212 bridge provides easy conversion from ITU-T G.703 E1 channel to Ethernet interface. Can used widely in connecting between WAN and LAN, monitoring, etc. The Ethernet interface is 10/100Mbps auto negotiation and can be full/half duplex. The E1 is transparent and in full rate, which can support the E1 unframed mode, including fractional E1 per request. A pair of MODEL7212 offer a cost effective solution for using existing E1 leased lines for transparent Ethernet service. Local management of the MODEL7212

Converter is provided via DIP switches. Front panel LEDs monitor the G.703 link, Ethernet LAN and serial ports for status and Loss of Sync. MODEL7212 compact G.703 Access Converter provides E1/2.048 Mbps Network Termination as well as serial or Ethernet LAN interface conversion in a standalone or rack mount package. MODEL7212 terminates the G.703 Telco interface and converts the data for transmission to a user-oriented 10/100BaseT(X) interface.

Specification

E1 interface

Standard: Comply with ITU-T G.703
Output tingle displace: accord ITU-TG.735 advice
Input tingle limit: accord ITU-TG.823 advice
Output tingle: accord ITU-T G.823 advice
Frame format: framed
Interface rate: $N \times 64\text{Kbps}$ ($N=1 \sim 32$) rate
CRC checkout: no
Port coding: HDB3
Port transmission: 2KM
Port protection: 1500V electromagnetism isolate
Port connector: 120 Ohm(RJ-45) and 75 ohm(BNC double coaxial)

Ethernet port

Interface Types: 10/100BaseT, full/half duplex
Standards Compliance: IEEE 802.3
Bit Rate: 10/100BaseT limited to Max 2.048 Mbps

Connectors: RJ45 (10/100 Base-T Electrical)

Line code: Manchester Encoding

Internal and recover clock

Environment, Power and Dimension

Working temperature: -25 to 70°C

Storage temperature: -40 to 85°C

Humidity: Relative humidity 5% to 95%

Input power: 220VAC or -48VDC

Consumption: 2W

Power protection: From high voltage/short circuit

L×W×H: 227.4mm×146.3mm×42.7mm

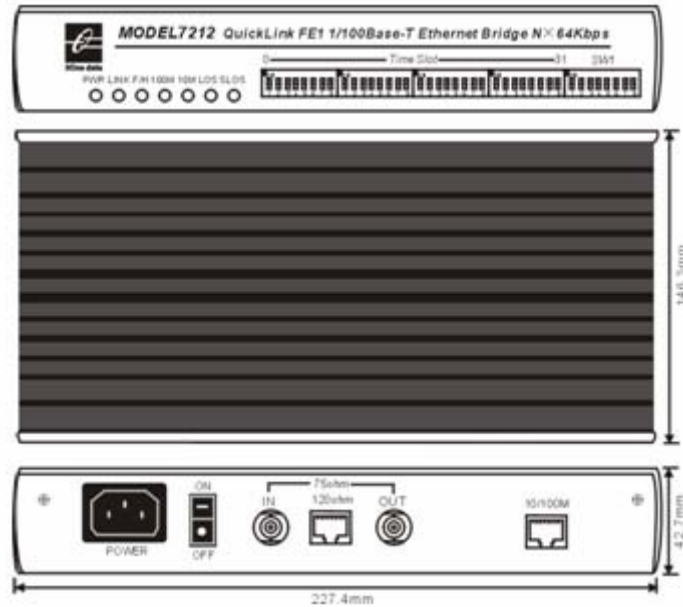
Shell: Plastic

Weight: 260g

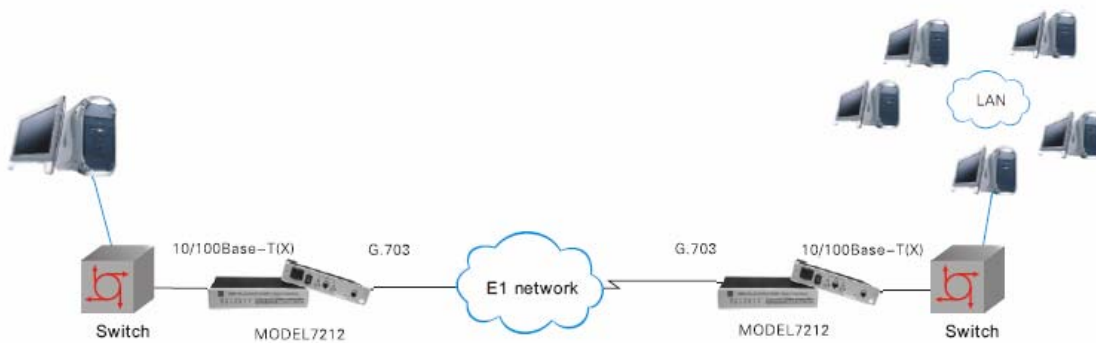
Warranty: 5 years

Approvals: FCC, CE, RoHS approvals

Dimension



Application



Packing List

1. MODEL7212 Ethernet Bridge ×1
2. 220V power line ×1
3. User manual ×1



4U, 19 inch, 16 slots Rack